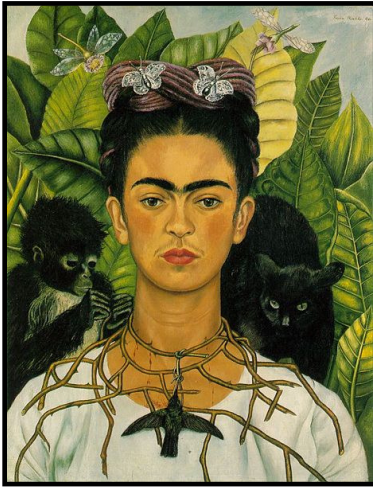


# Self-Portrait Development

## Beginning Art

### Pre-instruction Drawings

Do each of the following drawings on a new page in your sketchbook. Do not draw on the back of the page for the next drawing, but start on a whole new page.



Frida Kahlo, Self Portrait

### #1 Self Portrait

1. In your sketchbook, draw a self portrait.
2. Use a mirror and sit about 2- 2 ½ feet away from it (arm's length).
3. When you have finished, title, sign, and date the drawing in the lower left or right hand corner.

### #2 A person, drawn from memory

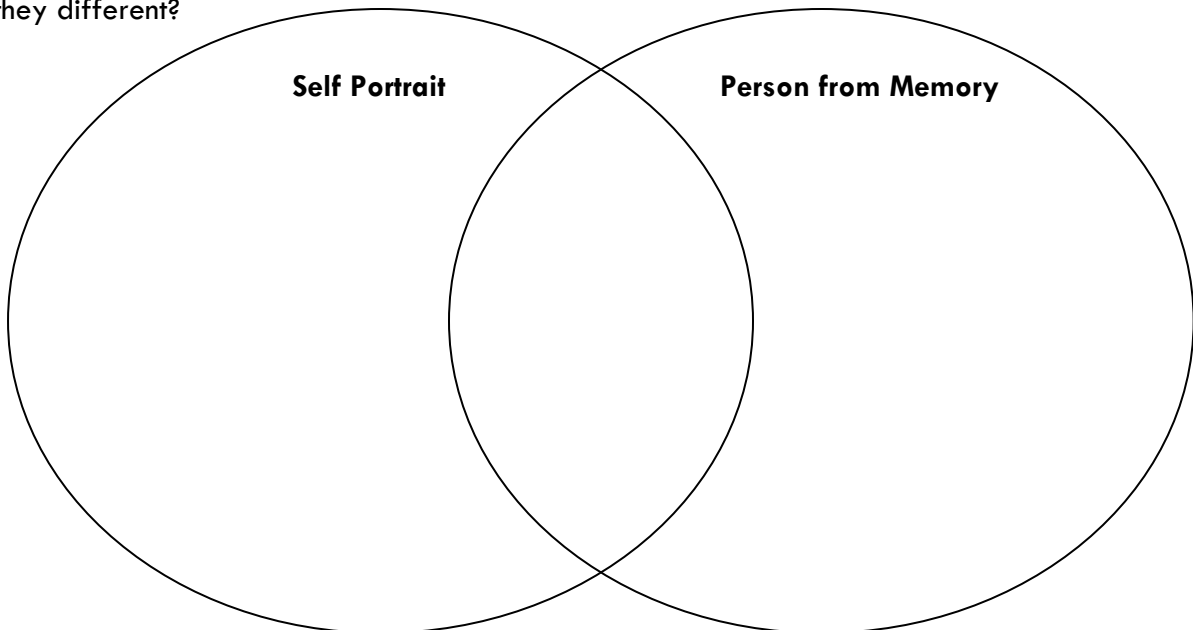
1. Call up in your mind's eye an image of a person, perhaps someone from the past or a person you know now. Or you may recall a drawing you did in the past or a photograph of a person well known to you.
2. To the best of your ability, make a drawing of that person. You may draw just the head, a half-figure, or the whole figure.
3. When you have finished, title, sign, and date your drawing.

### #3 Your Hand

1. Seat yourself at a table to draw.
2. If you are right-handed, draw your left hand in whatever position you choose. If you are left-handed, draw your right hand.
3. Title, sign, and date your drawing.

After completing all of the drawings, **reflect** about what you like and don't like about each piece. Write a few comments on the back of the drawings

Compare your self-portrait with the person drawn from memory. How are they similar? How are they different?

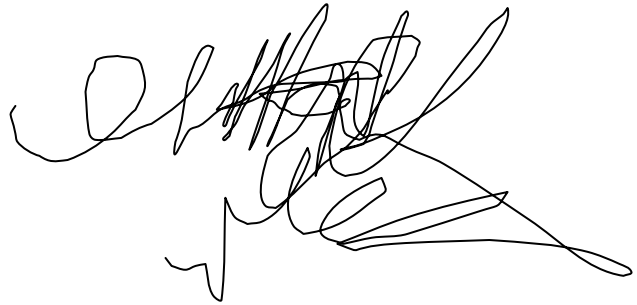
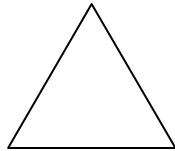
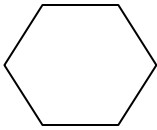


**What is a symbol system?**

Sign your name four different ways.

- 1.
- 2.
- 3.
- 4.

**Painterly vs. Linear**



**Lines**

- Bold:
- Broken:
- Pure:
- Lost and Found: